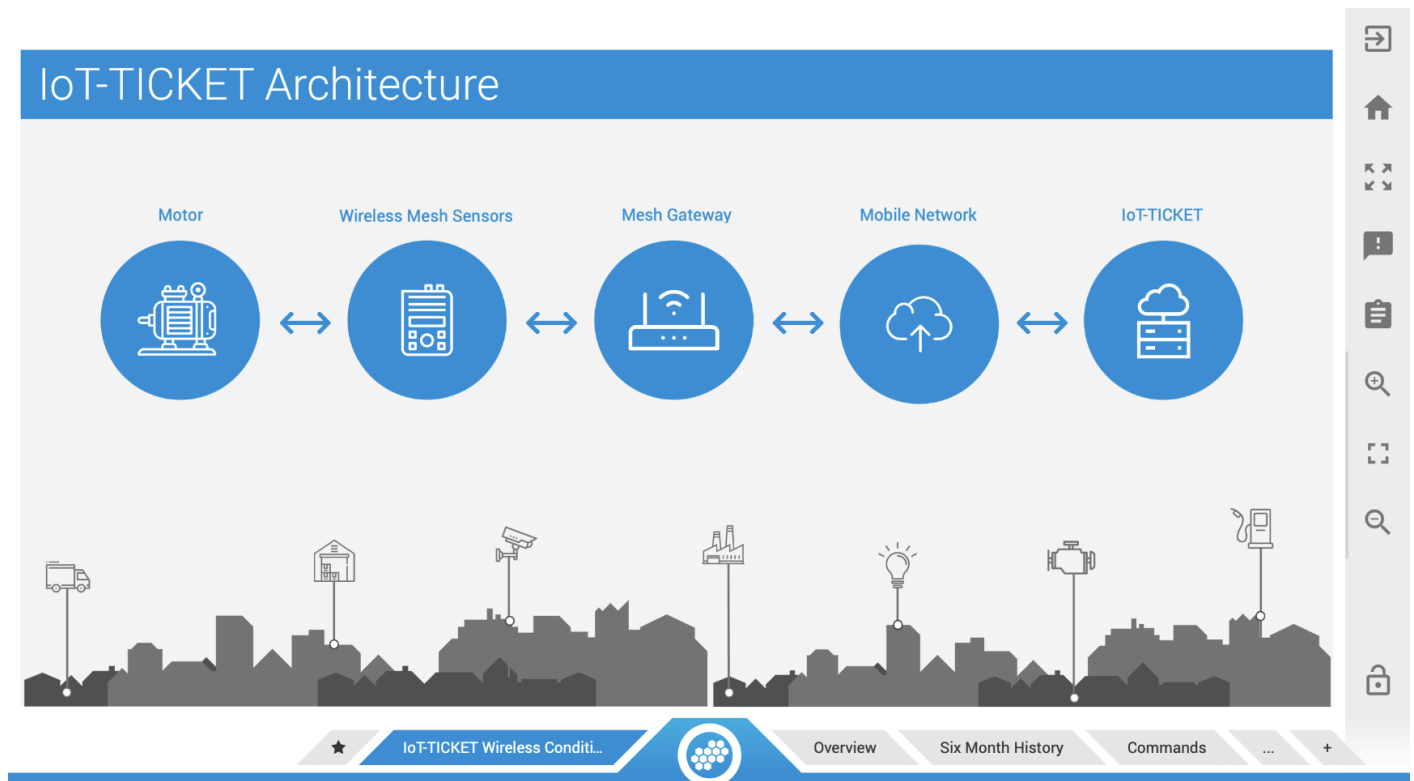


Condition Monitoring Starter Kit

Demo pictures of the IoT-TICKET user interface



Wireless Condition Monitoring Solution - Node Commands

Wapice IoT-TICKET TREON

Trigger OnDemand Data Read from Selected Node

Trigger OnDemand Read

Latest Values from the Sensors

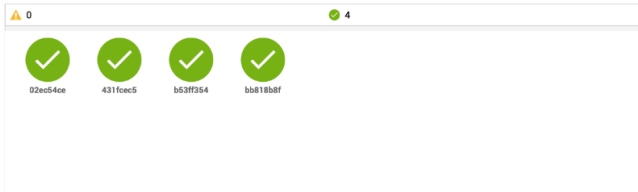
Node Id (6)	RMS X	RMS Y	RMS Z	Temperature (C°)	Timestamp
0abc34f8					
4ee59b16					
6ef114e6					
d3b5cd1f5					
f714086d					

Navigation bar: [Wireless Condition Monitori...](#) | Overview | Six Month History | **Commands** | ... | +

Wireless Condition Monitoring Solution - Overview

Latest Update from Sensor: 2020-09-01 08:03:39

Sensor Statuses (Online)

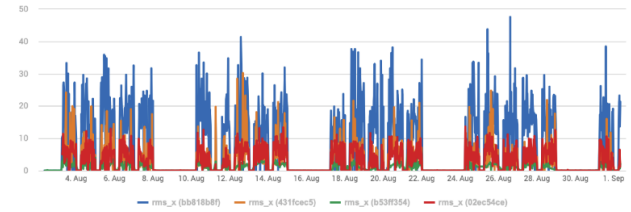


Availability Timeline (Last 7 Days)

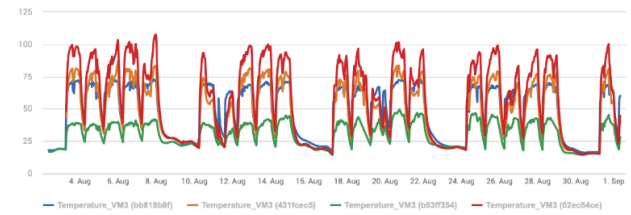
August 2020								September	Availability
Tue 25	Wed 26	Thu 27	Fri 28	Sat 29	Sun 30	Mon 31	Tue 1		
[Green bars]									95.85%
[Green bars]									100.00%
[Green bars]									40.36%
[Green bars]									93.48%

1 Day 7 Days 30 Days

Sensor Root Mean Square Analysis

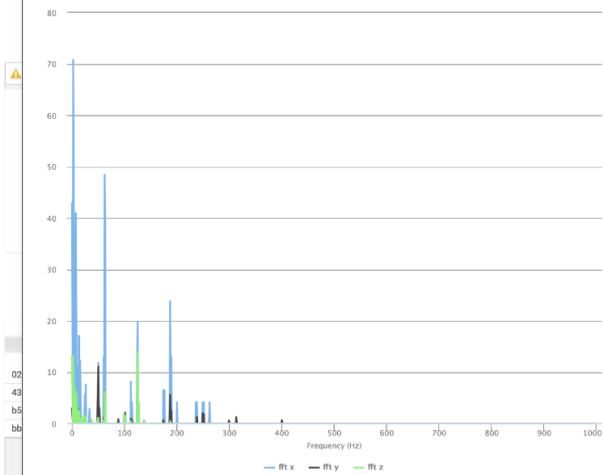


Sensor Temperature Analysis



Amplitude Spectrum (FFT)

FFT Widget

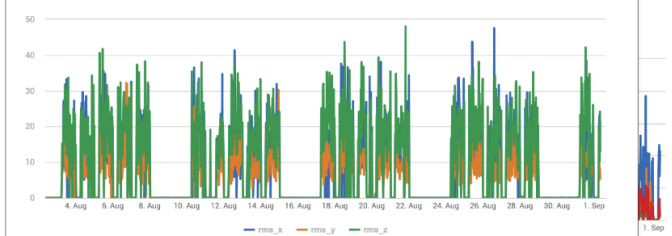


Latest update from sensor: 2020-09-01 08:01:01

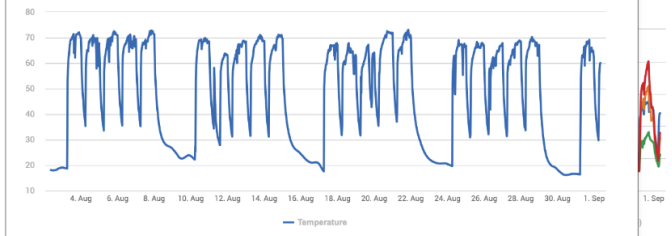
Sensor 1 Analysis

RMS X-Y-Z

1 Day 7 Days 30 Days



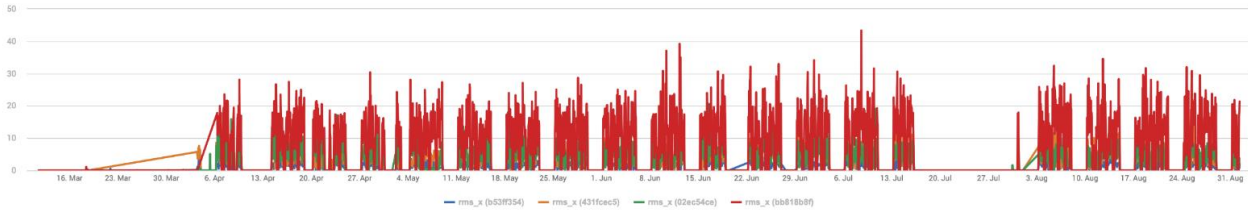
Temperature



Latest Update from Sensor: 2020-09-01 08:03:39

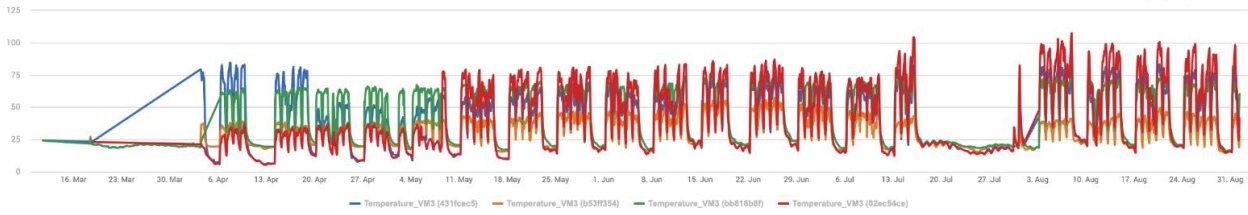
Sensor Root Mean Square Analysis

Data grouping level: Hour



Sensor Temperature Analysis

Data grouping level: Hour



- 🏠 Home
- 🔍 Search
- 📄 Document
- 🔒 Lock